

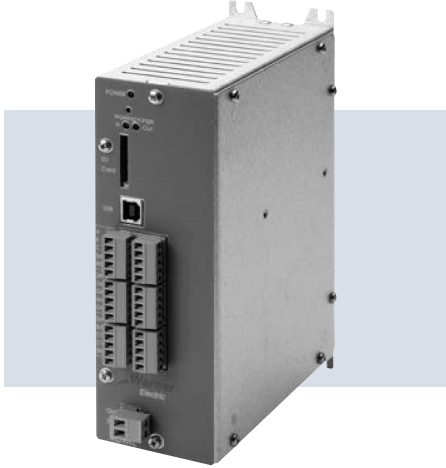
Tension Controls

Modular Control Components

BXCTRL

Tension Control

(P/N 6910-448-306)



Tension Controller

The BXCTRL controller is a solid state electronic control that receives signal from a Dancer pivot point sensor or 2 Load cells. It integrates 2 separate Digital PID Controllers and 2 separate Open Loop controls.

All setup can be made through a user friendly application and saved to the integrated memory, an SD card or your computer. Wire up to two Load cells or a Dancer arm to get a closed loop control with a linear or auto. compensation.

When associated with the BX2DRV, the controller becomes the BXCTRL-BX2DRV. Power supply, input and communication will be made by an internal connection.

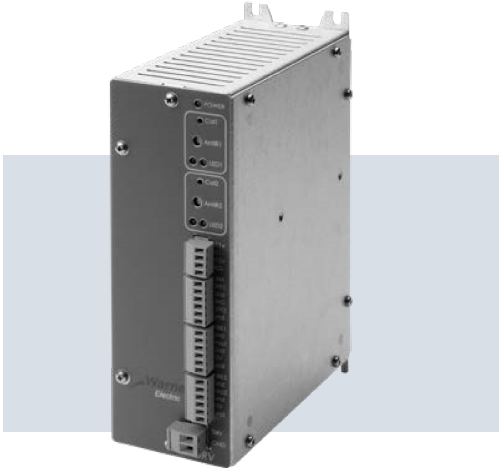
Specifications

Main Supply Voltage	24VDC +/-5%
2 Channels Sensors Input	Dancer Arm or up to two Load Cells (customer provided)
2 Channels Output	Selectable 0-10V or 4-20mA through an application
2 PID Controller	PID Gain adjustable with the application
USB Connection	Connect your BXCTRL to your computer with a USB cable and get access to the application
User Friendly Application	Setup all parameters through a user friendly application and get a graphic overview.
Parameters Partitions Saving	Through the application save your parameter partitions on your computer or in an SD card.
Open Loop Control	Get an open loop control by wiring an external sensor. Selectable 0-10V or 4-20mA
Linear and Auto. Compensation	Get a closed loop control with a linear or auto. compensation. Selectable with the application

BX2DRV

Driver

(P/N 6910-448-305)



BXCTRL-BX2DRV

Driver

(P/N 6910-448-307)



Tension Controller

This double channel driver can accept both voltage (0-10V) or current loop (4-20mA) input signals.

With being associated to a remote potentiometer, it will become an Open Loop Control, permitting then to manually control the braking torque.

Optional Rail DIN fixation available.

For use with TB, ATT and MPB or MPC unit.
POB, PRB-H, PTB, PMC, PHC or POC.
Sizes 10 or smaller.

Tension Control/Driver

Combines control and driver characteristics of BXCTRL and BX2DRV with a 24 volt driver in a single housing.

Specifications

Main Supply Voltage	24V DC +/-5%
2 Channels 4A Output	0-24V or 0-4A Selectable with Anti residual
2 Analog Input	0-10V or 4-20mA Selectable
Easy to set up	ON and OFF Mode Inputs
2 Auxiliary Inputs with a Calibration Feature	Get an open loop control with a roll diameter compensation Sensor Input 0-10V or 4-20mA Selectable